



3 Court Gardens, Gloucester, GL2 5JX

Offers Over £375,000

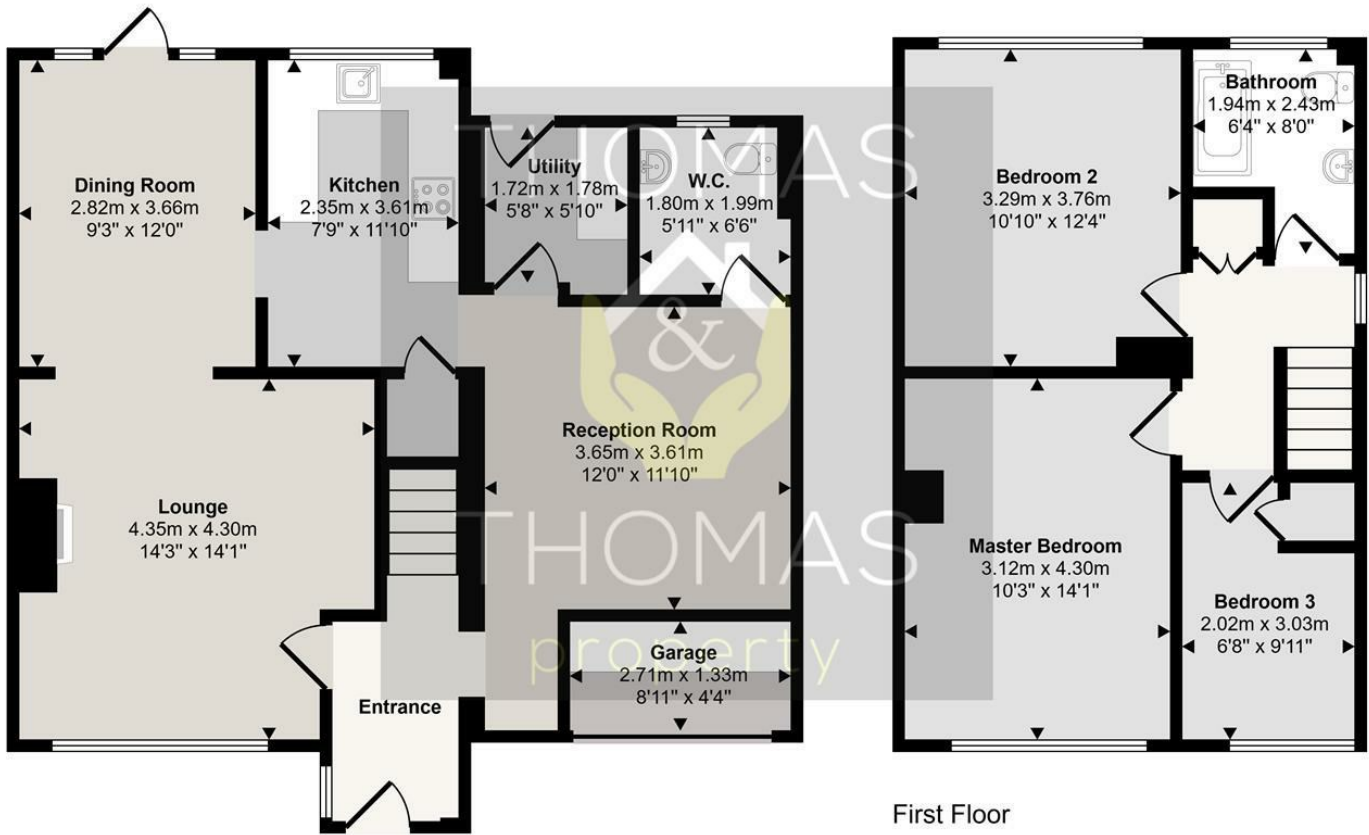
Thomas and Thomas are pleased to present this three bedroom family home which has been heavily updated by the current owners, including creating an additional reception room with downstairs WC and utility space, all whilst retaining some garage space.

Comprising of: spacious entrance hall leading to the well presented lounge with electric feature fire, good sized dining room which leads onto the large garden with patio and grass space. The kitchen benefits from integrated dishwasher and induction hob, with understairs larger cupboard. There is also a utility room, additional reception room which is currently a play room and downstairs WC. which already has plumbing in place for a shower if required.

Upstairs there three bedrooms, two doubles and a single with a shared modern family bathroom with shower over bath.

- Immaculate Family Home
 - Three Bedroom
 - Converted Garage
- Three Reception Rooms
 - Good Sized Garden
 - Driveway Parking

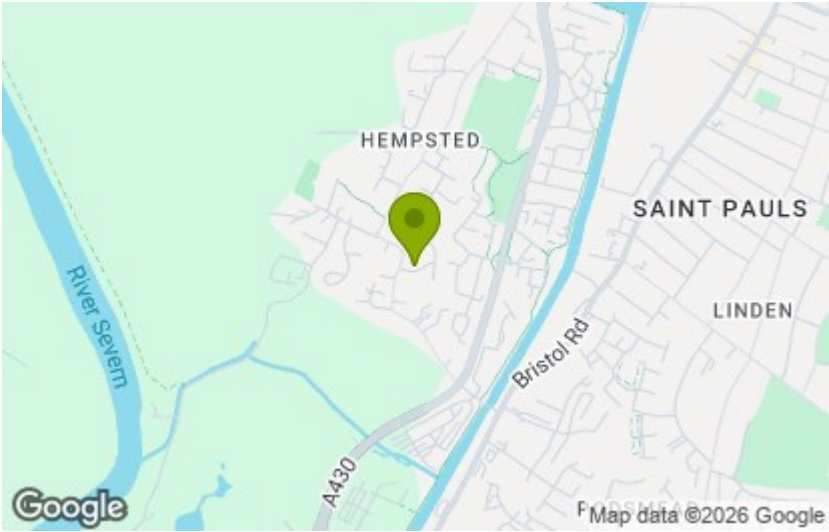
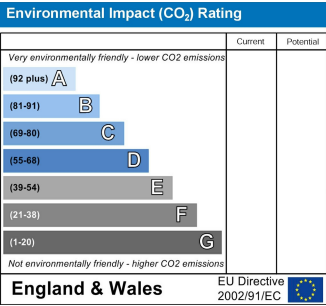
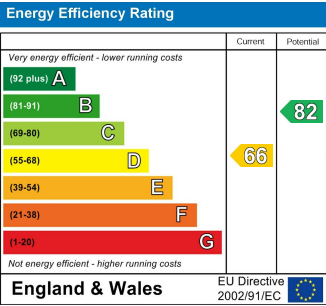
Approx Gross Internal Area
117 sq m / 1261 sq ft



First Floor
Approx 44 sq m / 472 sq ft

Ground Floor
Approx 73 sq m / 789 sq ft

This floorplan is only for illustrative purposes and is not to scale. Measurements of rooms, doors, windows, and any items are approximate and no responsibility is taken for any error, omission or mis-statement. Icons of items such as bathroom suites are representations only and may not look like the real items. Made with Made Snappy 360.



These particulars, whilst believed to be accurate are set out as a general outline only for guidance and do not constitute any part of an offer or contract. Intending purchasers should not rely on them as statements of representation of fact, but must satisfy themselves by inspection or otherwise as to their accuracy. No person in this firms employment has the authority to make or give any representation or warranty in respect of the property.